

**BERGER**

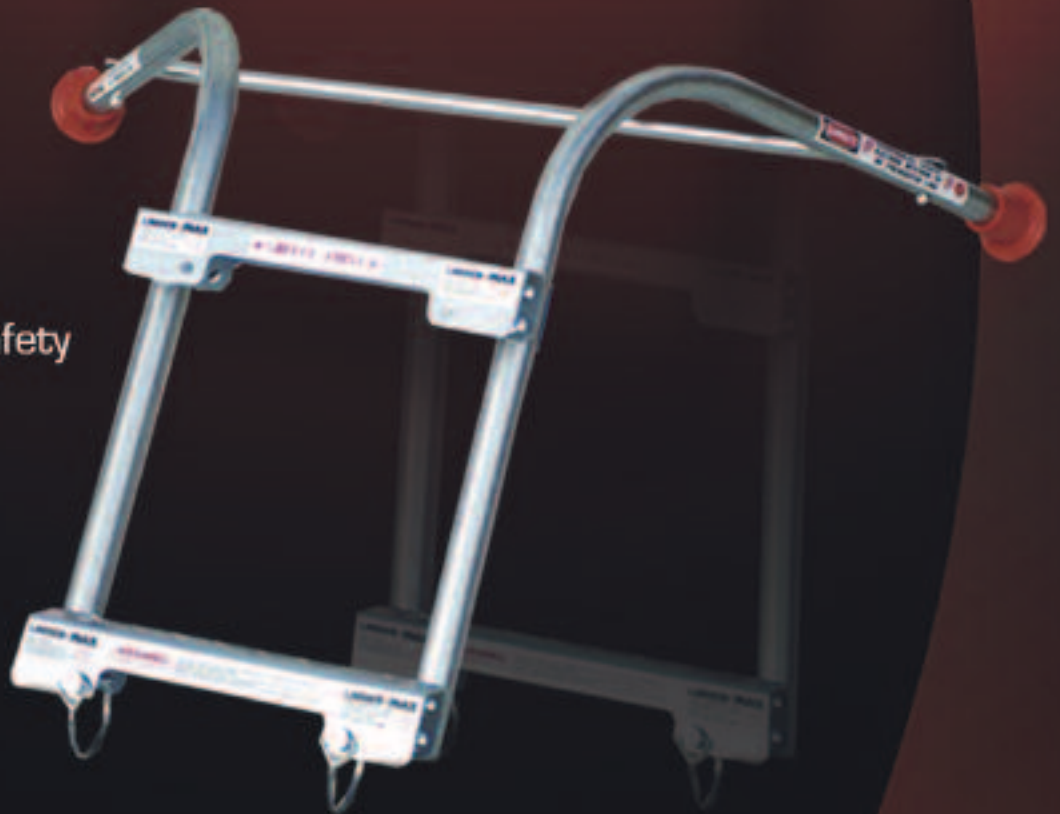
Quality Building Products Since 1874

TM

# Ladder-Max

The World's Greatest Ladder Stand - Off Stabilizer

Maximizing Ladder Safety  
and Work Efficiency



# Maximizing Ladder Sa

## Why The World's Greatest Stand-Off Stabilizer?

**Ladder-Max** is the only universal ladder attachment on the market today that is sturdy enough to meet the ever increasing demands in the contractor and home maintenance markets. Ladder-Max also meets the two most fundamental needs required by ladder uses:

**SAFETY:** The statistics are alarming when it comes to ladder related accidents. The risk of instability and dreaded sideslip is greatly reduced by Ladder-Max. This is due to its unique design and engineering, its galvanized steel fabrication and the 4 safety orange tip contact points. (Ladder-Max is OSHA and ANSI certified for direct roof placement)

**EFFICIENCY:** Savings in effort and time translate directly into money saved. Enhanced work angle, greater reach and more stability all adds up to increased work performance with Ladder-Max. Given that ladders need to lean up against a surface, how often can a simple task cause damage to both property and to your business reputation? Ladder-Max facilitates a pleasant, productive work experience while ensuring the protection of work surfaces such as shingles, gutters, fascia, siding, paintwork and roof edges.

### The Arch and the Wedge Design and Engineering at its Best

Researched, developed and extensively tested, Ladder-Max is fast becoming the industry standard in the stand-off stabilizer market. Fabricated from galvanized, rust resistant, lightweight steel, Ladder-Max rises to the occasion every time. Its distinctive design incorporates the arch and the wedge – 2 of the strongest physical shapes used in successful tools today, providing 40" of span and 19" of secure and stable stand-off. (Ladder-Max is patent pending)



# Safety & Work Efficiency

## Promotes Ladder Safety

- Secure, stable 19" of Stand-Off from sidewall or roof
- Rugged, Durable Steel Construction
- Designed, Tested and OSHA & ANSI Certified for Direct Roof Placement
- Work with confidence around overhangs and windows
- Allows a more natural work angle



## Safety Orange Contact Tips

Whether the Ladder-Max is placed against a wall or on a roof, the non-marring safety tips provide 4 points of contact, accentuating the downward pressure carried through the wedge angled arms. In accordance with the philosophy of increased safety and awareness, these safety orange tips assist in accurate identification of overhead hazards and in ladder placement when maneuvering a ladder within height restricted areas. The tips are also Ladder-Max's trademark and provide immediate brand recognition.

## Our Mission Statement

"To produce the best new ladder stand-off in the marketplace that meets the needs of contractors and homeowners in terms of ladder safety and work efficiency at an affordable price."

## The Contractor's Dream - The Homeowner's Companion



# Works With Extension or Articulated Ladders Aluminum, Fiberglass or Wood



## Easy Assembly - Instant Attachment - Endless Uses

Once assembled (average 7 minutes), your Ladder-Max is designed to attach or detach from your ladder with convenience and without any tools in less than 10 seconds! The applications are numerous: from gutter installation and roof repair to painting, cleaning, and decorating a home. Whether used professionally or at home, your new Ladder-Max will partner your efforts in **Maximizing Work Efficiency and Ladder Safety.**

### Specifications

#### Assembled Dimensions:

|           |             |          |
|-----------|-------------|----------|
| Height:   | 20-3/4"     | (52.7cm) |
| Width:    | 38-1/2"     | (97.8cm) |
| Depth:    | 19"         | (48.3cm) |
| Weight:   | 7 lb. 11oz. | (3.49kg) |
| Ship. Wt. | 9 lb. 6 oz. | (4.25kg) |

Specifications subject to change without notice

### Materials

- 16 g. heavy duty galvanized steel steps
- Zinc-plated steel nuts, bolts, and washers
- 16. g. heavy duty galvanized steel tubing
- Zinc anodized spring steel wire loop
- Zinc anodized steel lock pin
- Safety orange plastic tip
- Replacement parts available.



 a Euramax company

© 2006 Berger

BERGER BUILDING PRODUCTS, INC.  
805 Pennsylvania Blvd. • Feasterville, PA 19053

**(800) 523-8852**

(215) 355-1200 • Fax: (215) 355-7738

[www.bergerbros.com](http://www.bergerbros.com)