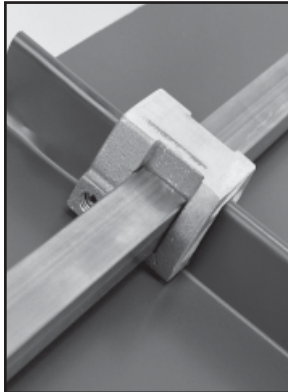




# SNOW RETENTION SYSTEMS



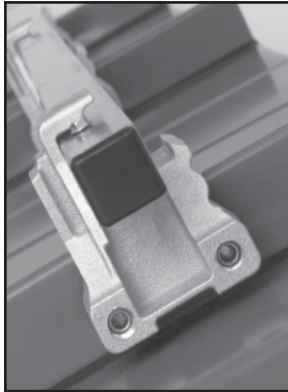
## S-Rail® Snow Retention System (S-Casting)

- (1 Rail) Low Profile Snow Retention System, Standard Snow Loads.
- Functions BELOW the Standing Seams on Metal Roofs - Helping to Control the Possibility of Dangerous Ice Slides.
- Requires NO Penetration of the Roof and is Easy-To-Install.
- Economical Snow Rail that's Easy to Retrofit to Existing Roofs.
- Available in Mill Finished Aluminum, Black Primed, or Berger can Custom Paint to Match the Roof.
- Rail Sold Separately.



U. S. Patent 6688047

Mill Finished Aluminum		Custom Painted		E-Coat Black Primer	
Code	Price	Code	Price	Code	Price
SCSTSF		SCSTSFP		SCSTSFE	



## E-Rail® Snow Retention System (E-Casting)

- (1-2 Rails) Moderate Snow Loads.
- Stronger and Lighter System that offers between the Seams Protection on Metal Roofs - Helping to Control the Possibility of Dangerous Ice Slides.
- Requires NO Penetration of the Roof and is Easy-To-Install.
- Available in Mill Finished Aluminum, Black Primed, or Berger can Custom Paint to Match the Roof.
- Receptor Slot for Custom Ornamental Attachment.
- Rail Sold Separately.



U. S. Patent 6688047

Mill Finished Aluminum		Custom Painted		E-Coat Black Primer	
Code	Price	Code	Price	Code	Price
ECSTSF		ECSTSFP		ECSTSFE	



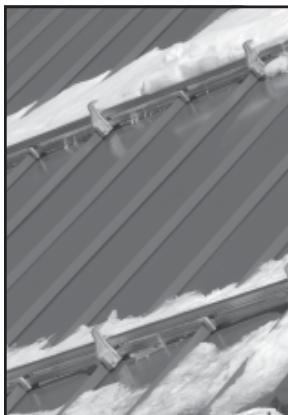
## F-Rail® Snow Retention System (F-Casting)

- (2-3 Rails) Heavy Snow Loads.
- The Only Rail Style Snow Fence Available that Functions BELOW the Standing Seams on Metal Roofs - Helping to Control the Possibility of Dangerous Ice Slides.
- Requires NO Penetration of the Roof.
- Receiver "Pockets" Make it an Easy-To-Install System.
- Easy to Retrofit Existing Roofs.
- Available in Mill Finished Aluminum, Black Primed, or Berger can Custom Paint to Match the Roof.
- Rail Sold Separately.



U. S. Patent 6688047

Mill Finished Aluminum		Custom Painted		E-Coat Black Primer	
Code	Price	Code	Price	Code	Price
FCSTSF		FCSTFP		FCSTSFE	



## F-Rail®, E-Rail® & S-Rail® Snow Retention System Components

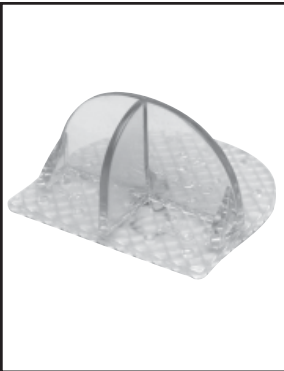
- TBSS20 Tubing is Available in 16 Gauge Stainless Steel and is 20 feet x 1 inch square. Tubing is Priced by the foot and Sold in Full Lengths Only.
- TBCR24P Tubing is Available in 16 Gauge CR Steel and is 24 feet x 1 inch square, Painted to Match the Roof.
- Tube End Caps are Available in Black Plastic.
- Stainless Self Tap Screws #8 x 1/2".
- Stainless Self Tap Screws are Sold by the Bag - 25 Screws per Bag.

TUBING		END CAPS		SCREWS	
Code	Price	Code	Price	Code	Price
TBSS20		TUBCAP		STS812	
TBCR24P					

Please call Berger at (800) 523-8852 for specifics as these products are typically quoted as a "system".



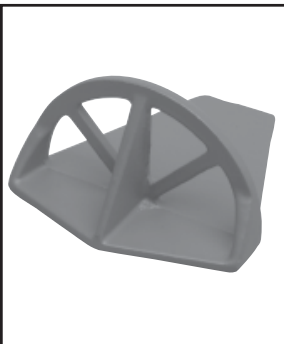
# SNOW RETENTION SYSTEMS



## Mullane SNOW BOSS® Model #650 for Metal Roofs - 50 pcs. per ctn.

SNOW BOSS #650 Series is constructed with durable UV resistant polycarbonate and is compatible with all non-copper metal roof systems. The Model #650 includes a new patent pending base design, which is the latest technological advance in adhesive mounted (SB-190) snow guard systems. This cross hatch design strengthens adhesive grip by increasing surface area and texture, and provides for faster solvent escape, and adhesive curing. The series of evenly spaced holes in the base allow the solvents to dissipate quickly, and become "glue rivets" when the adhesive keys in the holes for a more secure application. **Adhesive failure does not constitute Berger product defect and is not the responsibility of Berger.**

Clear Polycarbonate	
Code	Price
650C	



## Mullane SNOW BOSS® Model #690 for Metal Roofs - 50 pcs. per ctn.

SNOW BOSS #690 are a decorative, spoked, half-round designed solid cast aluminum snow guards. They are well suited for the mid-panel application on all standing, batten, and flat seam (non-copper) metal roofs. Typical installation is by means of high strength adhesives (SB-190) that develop superior peel and shear bonding strength on modern metal roofs coated with plastic resin paints such as Kynar®. These aluminum guards are available mill finished or custom color matched using Dupont® Imron enamels. **Adhesive failure does not constitute Berger product defect and is not the responsibility of Berger.**

Mill Finished Cast Aluminum		Painted Cast Aluminum	
Code	Price	Code	Price
690M		690C	



## Mullane Model #500 Bronze Guard® Snow Fence Bracket (for 3 Pipes)

The Model #500 Snow Fence Bracket is cast from solid bronze for lifetime durability. The castings have been carefully engineered to assure maximum strength at the points of greatest stress when under load. Double back brace brackets are standard, and give redundant protection against casting failure when under load. Holes for rails are 1.125" to accommodate 1.05" (od) brass pipe. The brackets are available in three angles: 90, 67.5, and 45 degrees. The base plate is 1/8" 220 bronze. The Model #500 is typically installed along the perimeter of slate roofs with rafters up to 25 ft. in areas with moderate to high snow falls. The Model #500 is a custom order and the base plate can be fabricated to any specified size. 3/4" Red Brass Pipe, Couplings and End Caps sold separately. Please call Berger at (800) 523-8852 for more information.

Bronze Bracket & Plate	
Code	Price
500BBA	

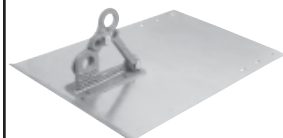


## Mullane Fitrite #121 Protector Snow Fence Bracket (for 2 Pipes)

The Model #121 Snow Fence Bracket is cast in galvanized malleable iron for durability. The castings are mounted on an 11 gauge galvanized steel plate. The brackets accommodate two .080" (od) galvanized pipes. The Fitrite #121 is typically installed on slate roofs with rafters not over 18 ft. in areas with moderate snow falls. The Fitrite #121 is a custom order and the base plate can be fabricated to any specified size. 1/2" Galvanized Pipe, Couplings and End Caps sold separately. Please call Berger at (800) 523-8852 for more information.

Galv. Malleable Iron Bracket & Steel Plate	
Code	Price
FR121ML	

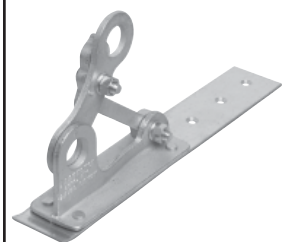
## SNOW RETENTION SYSTEMS



### Mullane Fitrite #122 Protector Snow Fence Bracket (for 2 Pipes)

The Model #122 Snow Fence Bracket is cast in bronze for durability. The castings are mounted on an 11 gauge galvanized steel plate. The brackets accommodate two .080" (od) brass pipes. The Fitrite #121 is typically installed on slate roofs with rafters not over 18 ft. in areas with moderate snow falls. The Fitrite #122 is a custom order and the base plate can be fabricated to any specified size. 1/2" Red Brass Pipe, Couplings and End Caps sold separately. Please call Berger at (800) 523-8852 for more information.

Bronze Bracket & Brass Plate	
Code	Price
FR122BR	



### Mullane Fitrite #124 Mini Protector Snow Fence Bracket (for 2 Pipes)

The Fitrite #124 Mini Protector Snow Fence Bracket is cast in malleable iron for durability. The castings are mounted on a solid galvanized steel plate, 2" x 12", with predrilled holes for easy installation. The bracket assembly is set up to accommodate two 1/2" galvanized pipes. Brackets are adjustable to the roof pitch. The Model #124 should be used only where low to moderate snowloads are anticipated and can be mounted to most any roof surface. The Fitrite #124 is available in cast bronze or galvanized malleable iron. 1/2" Red Brass Pipe or 1/2" Galvanized Pipe, Couplings and End Caps sold separately. Please call Berger at (800) 523-8852 for more information.

Cast Bronze		Galvanized Malleable Iron	
Code	Price	Code	Price
FR124BR		FR124ML	



(Custom plate not shown)

### Mullane Fitrite #131 Snow Fence Bracket (for 3 Pipes)

The Model #131 Snow Fence Bracket is cast from malleable iron and zinc plated for durability. The castings have been carefully engineered to assure maximum strength at the points of the greatest stress when under load. The Model #131 accommodates 3 galvanized iron, bronze, brass or stainless steel pipes. It is for use on large slate and shingle roofs with rafters up to 25 ft. long. The brackets are adjustable to various roof pitches. The base plate is 11 gauge galvanized steel, sized to the slate dimension, and predrilled and countersunk for fasteners. Bolts are Grade 5 zinc plated steel. The Fitrite #131 is a custom order and the base plate can be fabricated to any specified size. 3/4" Galvanized Pipe, Couplings and End Caps sold separately. Please call Berger at (800) 523-8852 for more information.

Malleable Iron Bracket & Galv. Steel Plate	
Code	Price
FR131ML	



(Custom plate not shown)

### Mullane Fitrite #132 Snow Fence Bracket (for 3 Pipes)

The Model #132 Snow Fence Bracket is cast from solid bronze for durability. The castings have been carefully engineered to assure maximum strength at the points of the greatest stress when under load. The Model #132 accommodates 3 brass, bronze or stainless steel pipes. It is for use on small slate roofs with rafters up to 18 ft. long. The brackets are adjustable to various roof pitches. The base plate is 1/8" commercial bronze or brass plate, sized to the slate dimension, and predrilled and countersunk for fasteners. Bolts are solid brass. The Fitrite #132 is a custom order and the base plate can be fabricated to any specified size. 3/4" Red Brass Pipe, Couplings and End Caps sold separately. Please call Berger at (800) 523-8852 for more information.

Bronze Bracket & Brass Plate	
Code	Price
FR132BR	



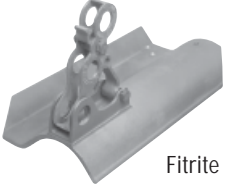
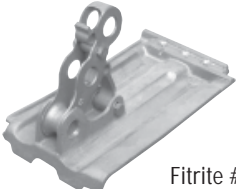
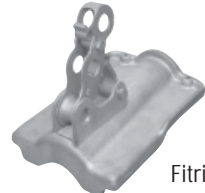
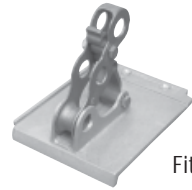

# SNOW RETENTION SYSTEMS

## Mullane Fitrite Pipe Snow Guards for Tile Roofs

Available for Spanish, French, Conasera, Interlocking & Mission Tiles. Please call for details.

- Codes for Fitrite Pipe Snow Guards are FR\_\_\_\_.
- The Third Space in the Code is for the Tile Base Style: Available in Spanish (5), French (6), Conasera (7), Interlocking (8) and Mission (9).
- The Fourth Space in the Code is for the Number of Pipes: Available in Two Pipes (2) and Three Pipes (3).
- The Fifth Space in the Code is for the Bracket Metal: Available in Aluminum Alloy (1) and Solid Bronze (2).
- Example: FR621 is a French Tile Base with a 2 Pipe, Aluminum Alloy Bracket.

**ENTER STYLE/PIPES/METAL CODE WHEN ORDERING**

 <p>Fitrite #5</p>	<p><b>Mullane Fitrite Series #5 Snow Fence Bracket with Spanish Tile Base (for 2 or 3 Pipes)</b></p> <p>The Model #5 has a Spanish tile base.</p>
 <p>Fitrite #6</p>	<p><b>Mullane Fitrite Series #6 Snow Fence Bracket with French Tile Base (for 2 or 3 Pipes)</b></p> <p>The Model #6 has a French tile base.</p>
 <p>Fitrite #7</p>	<p><b>Mullane Fitrite Series #7 Snow Fence Bracket with Conasera Tile Base (for 2 or 3 Pipes)</b></p> <p>The Model #7 has a Conasera tile base.</p>
 <p>Fitrite #8</p>	<p><b>Mullane Fitrite Series #8 Snow Fence Bracket with Interlocking Tile Base (for 2 or 3 Pipes)</b></p> <p>The Model #8 has an Interlocking tile base.</p>
 <p>Fitrite #9</p>	<p><b>Mullane Fitrite Series #9 Snow Fence Bracket with Mission Tile Base (for 2 or 3 Pipes)</b></p> <p>The Model #9 has a mission tile base.</p>

If your Tile is not shown, please call and we may be able to accommodate you. All Fitrite Pipe Snow Guards for Tile Roofs are a custom order. Please call Berger at (800) 523-8852 for more information.