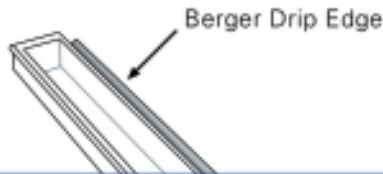


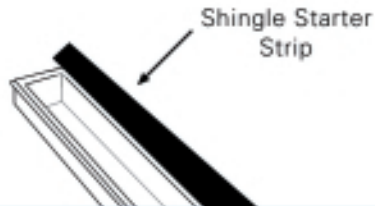
# Installation Guidelines

## STEP #1: Install Metal Drip Edge



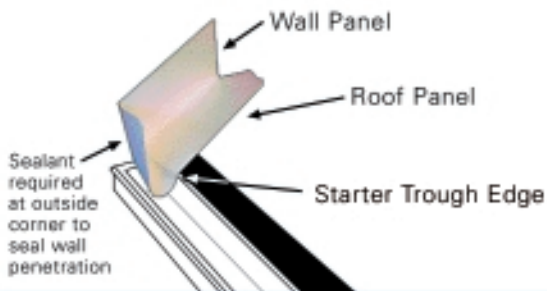
Prepare roof sheeting with Pro-Master RoofShield UDL™ underlayment and install drip edge per roof covering manufacturer's instructions.

## STEP #2: Install Shingle Starter Strip



Install the shingle starter strip per roof covering manufacturer's instructions.

## STEP #3: Install Kick-Out Flashing



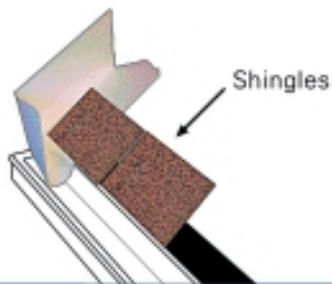
Install kick-out flashing as first piece of step flashing. Slide diverter up roof plane until starter trough stops at shingle starter strip (roof panel must be flat on roof and wall panel flush to wall). Attach the kick-out diverter ***to roof only*** at uppermost edge (at the point marked with "L" or "R"). Use one appropriate roofing nail. Apply sealant at exterior wall penetration per wall manufacturer's requirements.

*Consult roofing manufacturer's Shingle-to-Flashing abutment.  
Consult wall manufacturer's Counter Flashing recommendations.*



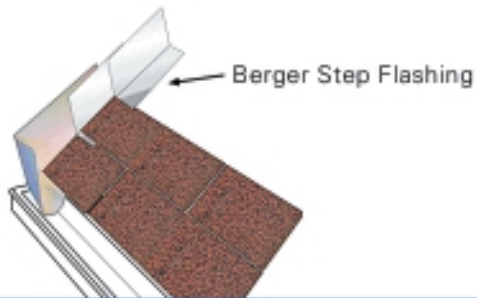
**Berger Kick-Out  
Diverters** ... a Consideration

#### STEP #4: Apply Roof Shingles



Apply roof shingles per the manufacturer's installation procedures.

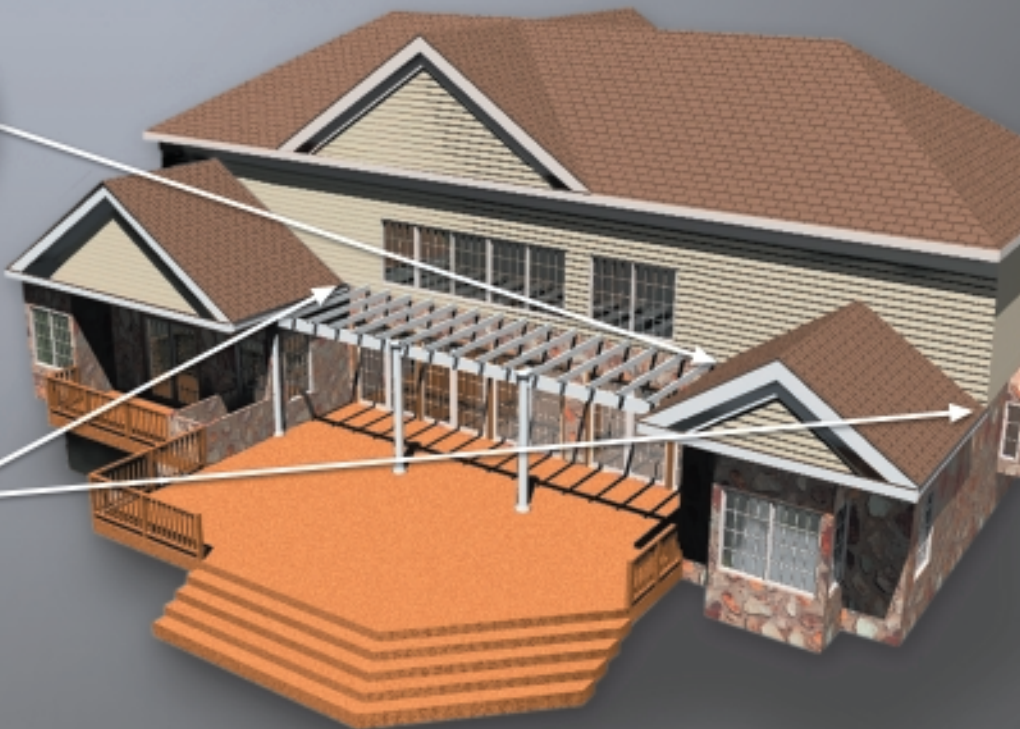
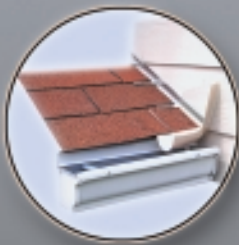
#### STEP #5: Install Step Flashing



Install step flashing compatible and appropriate for the roofing application.



*Protect a homeowner's investment by designing their home to stay dry. Install the Berger Diverter, a water management strategy that works.*



***istent, Quality Approach to Resolving Moisture Penetration***